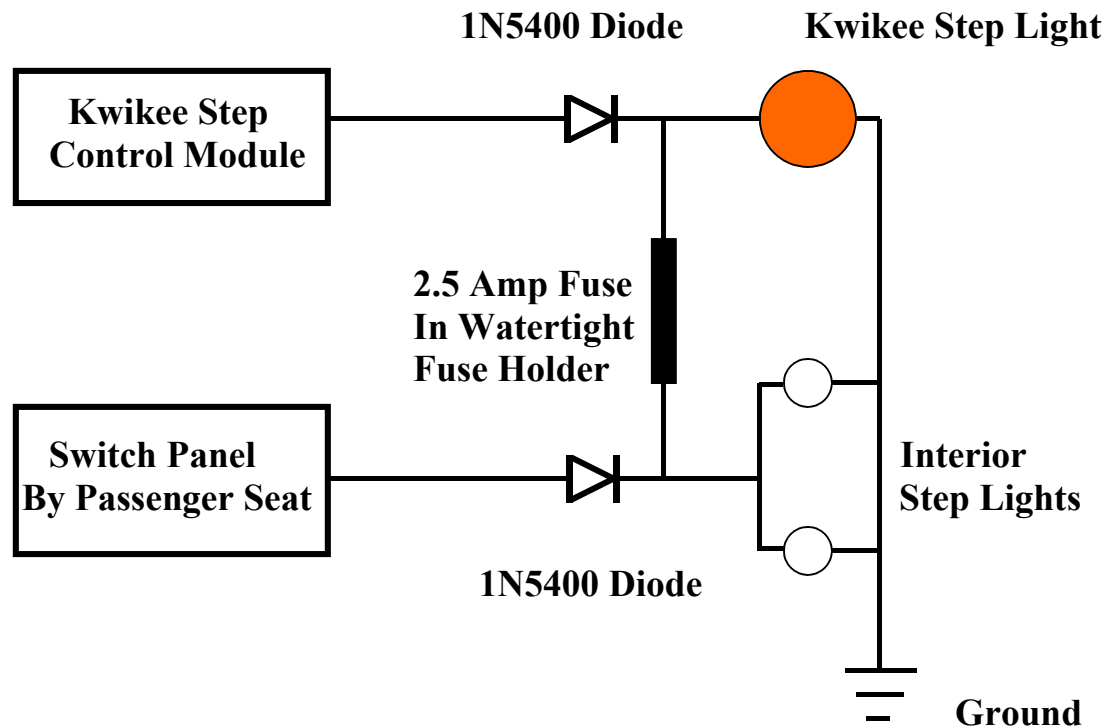


Controlling the Interior Step Lights and Kwikie Step Light

A few weeks ago I received a PM from a forum member asking how he could go about turning on the interior step lights when he opened the coach door without having to fumble for the interior step light switch.

I have given the idea some thought and just finished installing the following modification to my Kwikie step light circuit and interior step light switch.



The components are two 1N5400 diodes, one watertight fuse holder, one 2.5 amp fuse and about three feet of 14 gauge wire. First cut the wire between the Kwikie step light and the control module then installed the diode as shown. Then find the black wire going to the two festoon lights (interior step lights) cut that wire and again install a 1N5400 diode. Connect the fuse holder as shown in the diagram. After installing the fuse (the fuse is to protect both circuits) everything is ready for testing.

When the coach door is opened the Kwikie step light will illuminate and also the two interior step lights. When the door is closed the Kwikie step light and the two interior lights will all turn off. If the door is left in the open position after five minutes all three lights will automatically turn off.

If I decide to turn on the interior step light switch (panel by passenger chair) the interior step lights will illuminate and the Kwikie step light will also illuminate. The three lights will stay illuminated until turned off by the interior step light switch.