



## 2010 43QGP Allegro Bus

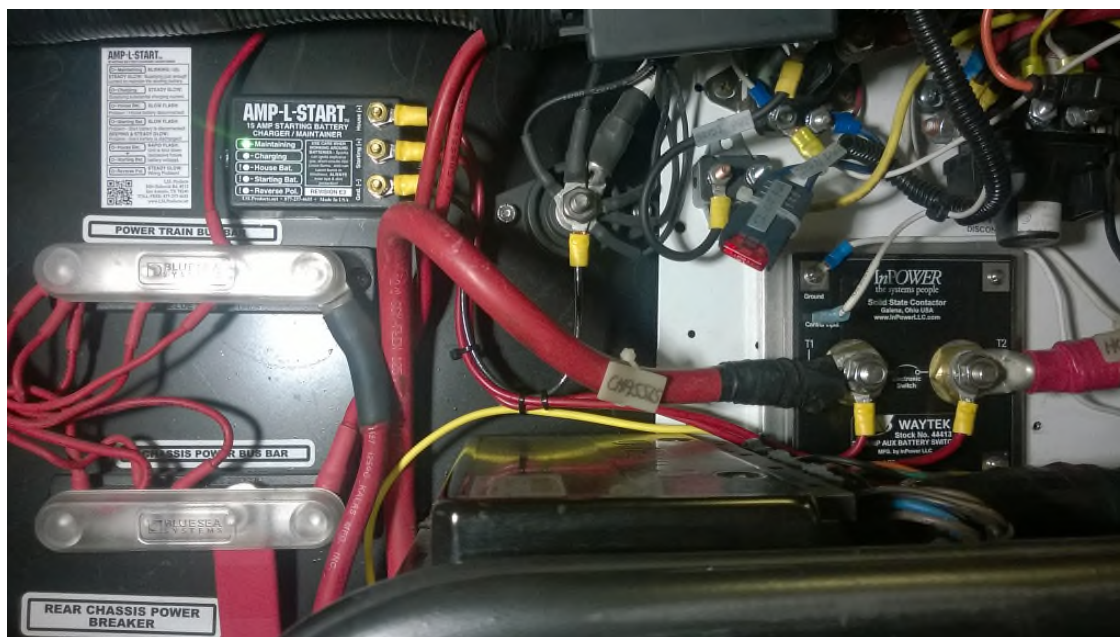
3/31/2016

### **ONE-HUNDRED-TWENTY-FOURTH - coach modification – INSTALLATION OF A AMP-L-START BATTERY CHARGER.**

Well time caught up with my Battery Minder installed to keep the chassis batteries maintained. One or both chassis batteries decided to go on strike after a month short of five years. Since the Battery Minder was doing all it could to maintain those batteries it failed the test and no longer has any output voltage.

So after reading everyone's advice on the best price for the 15 Amp Amp-L-Start, I ordered a unit from RVupgrades.com.

I installed the unit as close to the Waytek ABS-200 (Auxiliary Battery Switch) as possible. 10 gauge wiring was used for the two battery (Red) conductors while a 14 gauge wire was used for the ground conductor (Black).



As other members have posted, with two new chassis batteries and a new Amp-L-Start installed we should not have any battery problems for a while.