



2010 43QGP Allegro Bus

1/30/2016

ONE-HUNDRED-TWENTY-SECOND - coach modification – **DASH HEATER HOSE INSULATION.** In a continuing effort to get as much hot engine coolant to the dash of our coach both heater hoses were recently insulated.

Heater hoses on our Powerglide chassis are 1" OD hoses, 1" pipe insulation with sealing tape were installed over both front cap heater hose's before the sealing tape was removed, after both side of sealing tape were removed the two sides of the insulation seal together making a permanent seal around the hose.

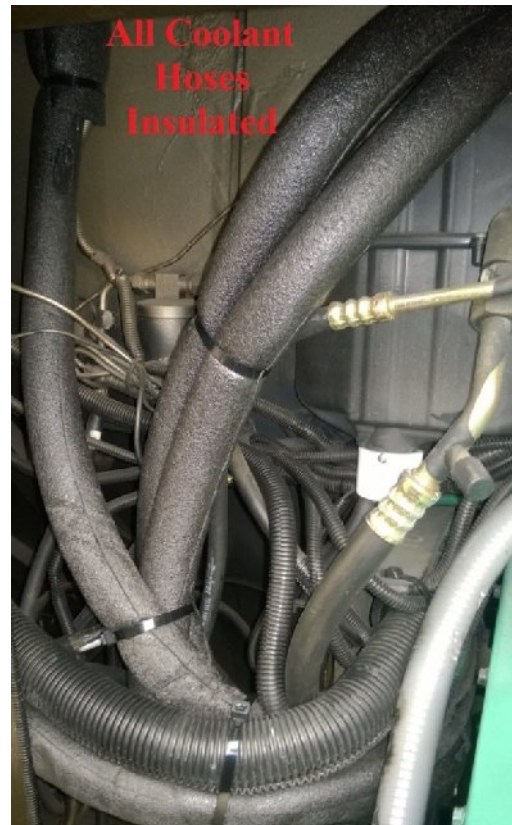
The below photo was taken after one of the two dash heater hoses had been insulated.



The second hose had the same insulation installed; both hoses were insulated as far back toward the engine as physically possible. At the bottom of the first photo four heater hoses along with several large electrical looms are routed thru the open chassis frame channel between the generator and right chassis frame.

After the hoses had been insulated large zip ties were used to secure all four hoses and wiring looms tight against the inside of the chassis frame.

Securing the hoses and wiring is necessary to prevent damage to either the hoses or wiring when the generator slide is extended or when the generator slide is closed.



I did not attempt to keep track of the cost of this modification, the insulation and tie wraps were the largest components of the cost.