



## 2010 43QGP Allegro Bus

11/26/2013

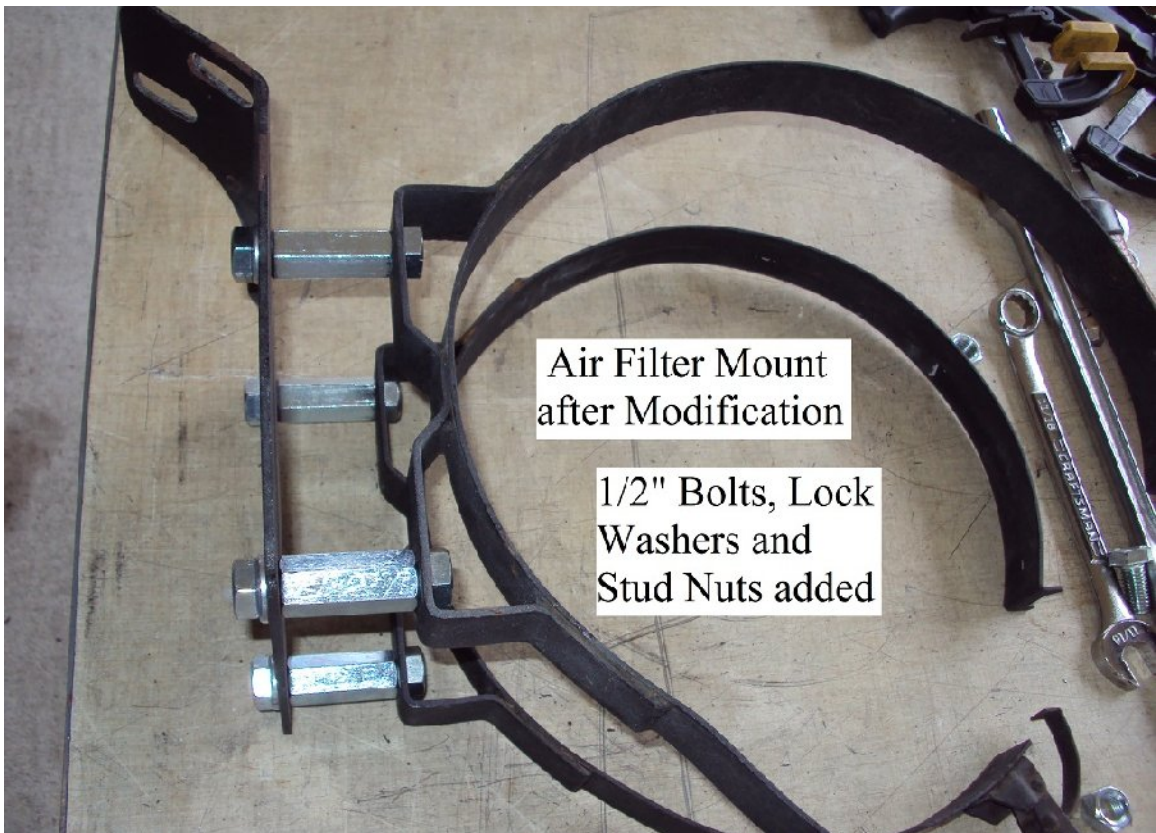
**ONE HUNDREDTH - coach modification – AIR FILTER MOUNTING BRACKET MODIFICATION.** During installation of the K & N air filter the air intake hose for the engine was rubbing against the metal of the rear bathrooms closet wall. To prevent further damage to the hose during installation of the K & N air filter a pad was placed between the hose and metal to prevent further damage to the hose until a modification could be made to prevent the hose from rubbing.



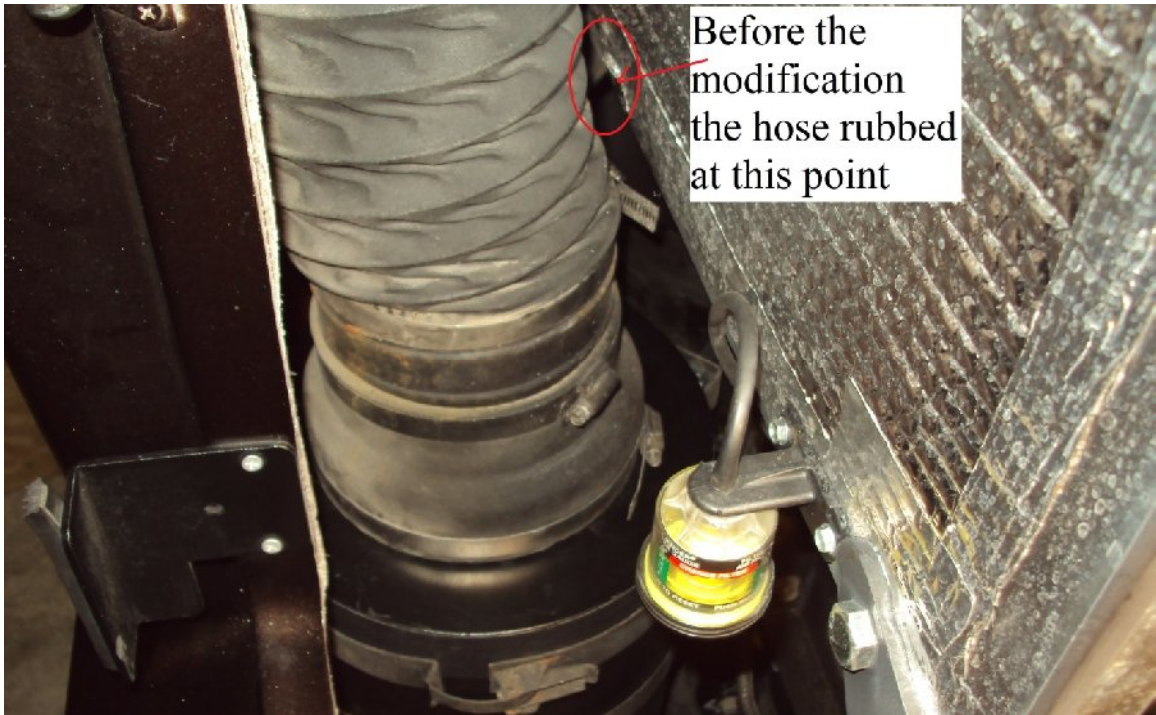
A year has passed since installation of the K & N air filter, during the servicing of the air filter the mounting bracket was modified for easier air filter service and to prevent further damage to the air intake hose. Seen above the air filter's mount is tucked into the left rear corner of the rear cap between the radiator housing and the fiberglass rear cap. In the above photo, the air filter mount is secured to the radiator housing with two bolts and nuts just above the blue silicone coolant hose. The next photo shows the OEM air filter mount prior to modification.



Comparing the above and below photos the  $\frac{1}{2}$ " bolts, lock washers and stud nuts push the air filter bracket straps forward about  $1\frac{3}{4}$ " which almost centers the air filter between the closet wall and the rear cap fiberglass.







It is clear to see the difference installation of the stud nuts made to move the air filter away from the closet rear wall.

