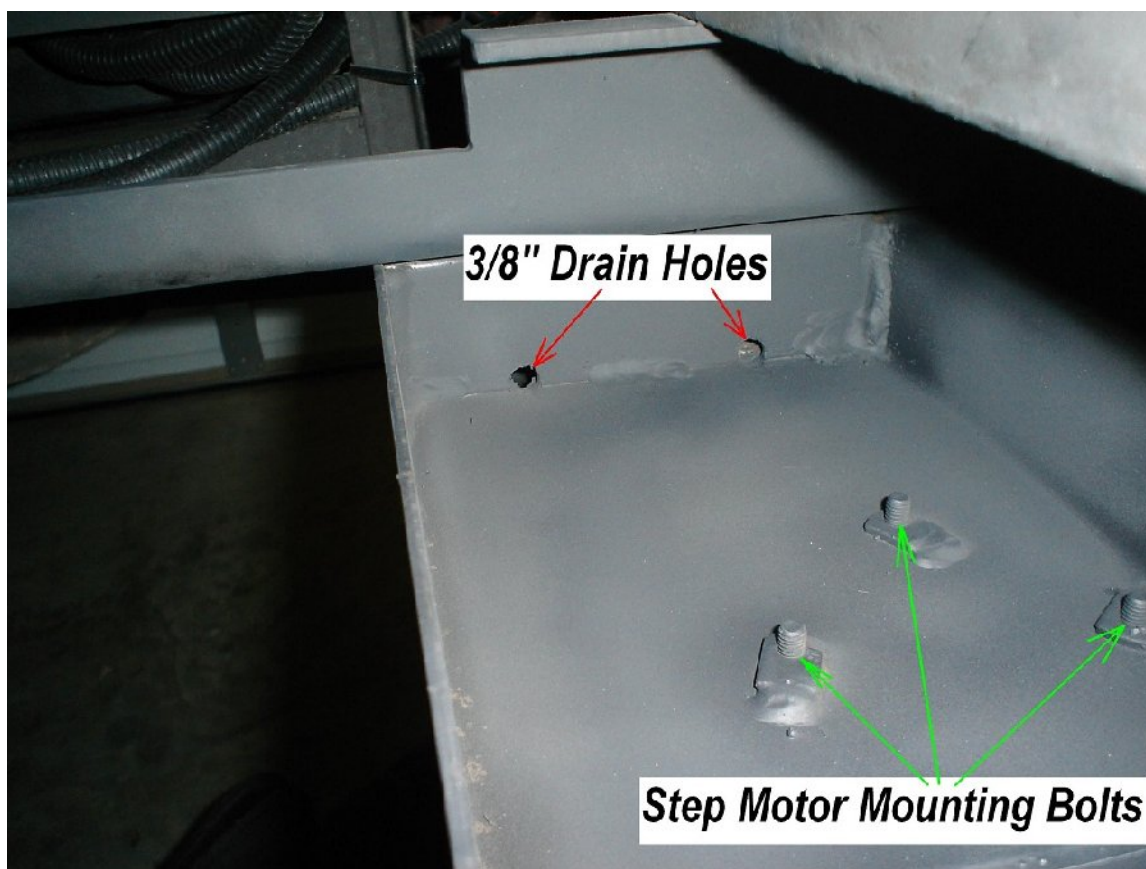




2010 43QGP Allegro Bus

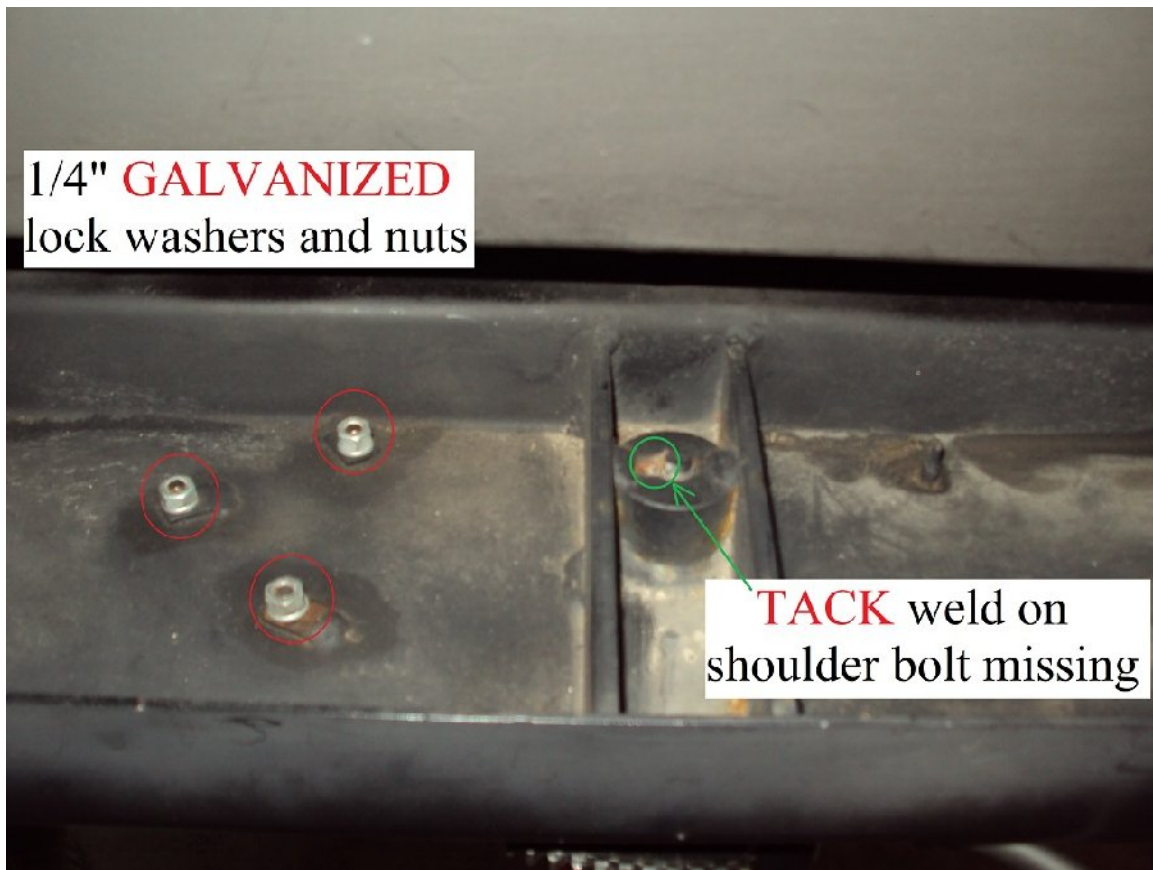
8/21/2013

NINETY-FIRST - coach modification – **COACH STEPS MOTOR BOLTS**. Over the past few months I've found the three bolts mounting the step motor to the step mechanism have loosened one or more turns. As seen in the below photo the three bolts extend about a 1/2" past the steps mount.



To prevent the bolts from backing out of the mount I've thought about adding a drop of Loctite to the threads of each bolt. After further consideration as the threads are clearly long enough to add a nut and lock washer I've decided to make a modification by adding a nut and lock washer rather than using the Loctite. The bolts are Metric after sorting thru my stock of hardware I came to the conclusion I did not have any 7mm nuts or lock washers. However I did have 1/4" GALVANIZED fence hardware, I found years ago the chain link galvanized hardware is actually a little larger than

the stock 1/4" hardware. I was able to find three galvanized lock washers and nuts which were installed on the three Metric bolts.



After everything was installed and tightened it is my hope this modification will prevent the loosening of the step motor bolts in the future, however time will determine if that is true.

Another problem my steps have is the shoulder bolt will loosen or tighten because the tack weld as shown above has broken allowing the bolt to move. Unless the broken tack weld becomes a big problem I do not think I'll go thru the process of installing a new tack weld, because the location makes welding the step while mounted hard to do and to remove the step mechanism to have the tack weld added is too much work.