



2010 43QGP Allegro Bus

12/1/2012

SEVENTYTH - coach modification – PART A TIFFIN POWERGLIDE CHASSIS RECALL 12V526.

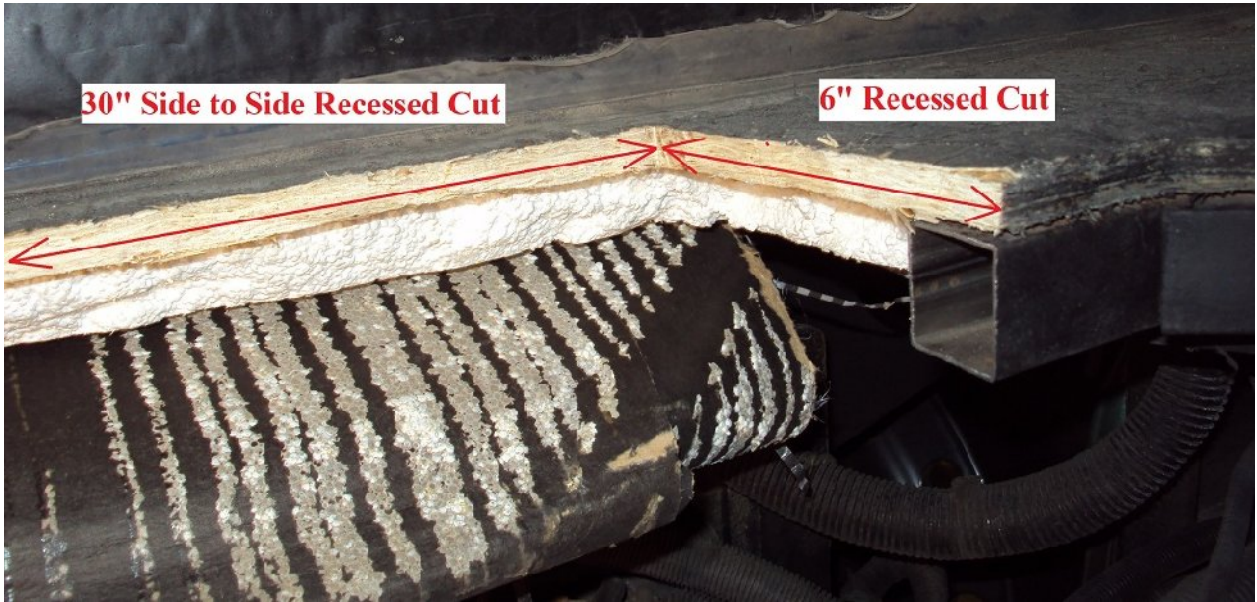
This modification will be presented in several parts in order to keep each part a manageable size.

On our coach, the original (prototype) Powerglide chassis EPA 2010 with ISL450 many first steps were attempted at producing a production model chassis. One of the problems now being found with this recall is the additional 7 inch floor extending into the engine compartment on **SOME** chassis. That extension prevents more than about a one inch space between the bottom of the floor and the flexible exhaust pipe routed around the rear of the engine from the driver side to the passenger side of the chassis. The close spacing has prompted this recall based on either a fire or near fire problems with the floor.

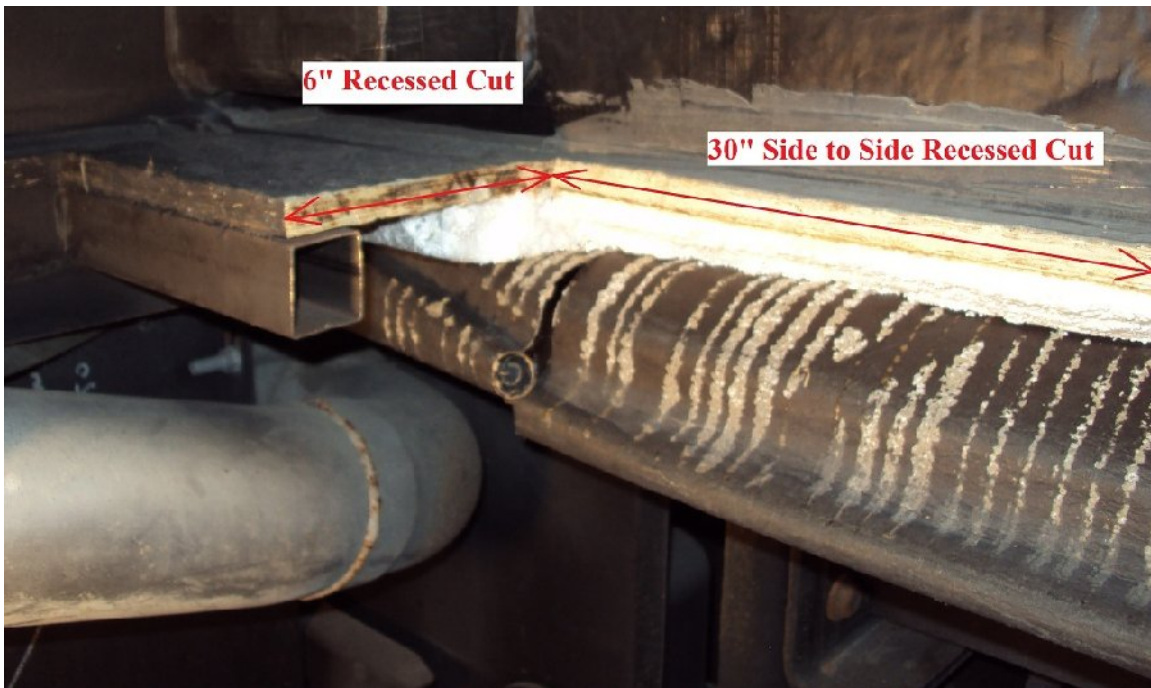
Below is a photo of our 43QGP chassis with the extended ledge sitting almost on top of the exhaust transverse pipe.



After removing the exhaust transverse pipe to allow better access to the section of floor to be modified while at the same time allowing me to test the bellows portion in this section of pipe checking for any hidden exhaust leaks.



The fiber paper glued to the Styrofoam under the OSB floor was pulled back before cutting the steel tubing and OSB flooring to be used later to protect the finished floor modification.





The Styrofoam was cut at an angle making it easier to pull the fiber paper over the Styrofoam where a $\frac{3}{4}$ " x $\frac{3}{4}$ " x 36" piece of pressure treated wood was used to sandwich the fiber paper over the floor. Self-drilling screws were installed from the bottom side thru the fiber paper thru the OSB floor and finally into the pressure treated wood. Two pieces of Styrofoam were used to plug the openings on the steel tubing before black silicone was applied over the raw metal and wood materials. The excess fiber paper was trimmed on the back side of the treated wood then the area was filled with silicone.



After a much need rest also to allow the silicone to cure Part B will take shape when the bellow section of the exhaust system is reinstalled. The new heat shield will then take its place.

After working on this file and seeing bare steel in several photos, the finished product will wait for a coat of black spray paint to be applied over the exposed metal.