



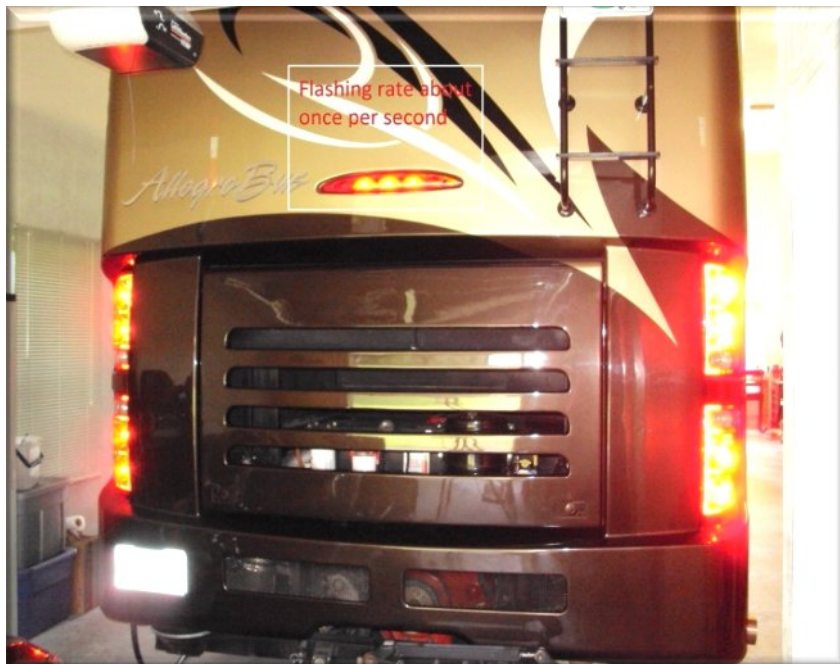
## 2010 43QGP Allegro Bus

5/7/2012

**FIFTY-FIFTH** - coach modification – **FLASHING THIRD BRAKE LIGHT**. This is a minor modification to the third brake light mounted on the low center of the rear cap.

After verifying Tiffin used a light bar with incandescent lamps for this fixture the only item needed to make the modification was a two lead bi-metallic flasher which was purchased from my local auto supply for \$ 4.00. After removing the four mounting screws used to mount the light bar to the rear cap the assembly was pulled out of its recessed mount. One of the two lead wires was chosen (the green wire) to cut in half, then two insulated 1/4 inch slip-on crimp connectors were attached to the ends of the severed green wires. The two slip on connectors were slid over the 1/4 inch flasher terminals. The brake lamp fixture was reinstalled into its mounting in the rear cap along with the flasher then everything was secured with the four screws.

After this modification when the service brake is applied the third brake light will flash ON and OFF about once per second while the service brake pedal is being depressed. When the coach's engine brake is active (engaged) and the service brake pedal is not being depressed the third brake light DOES NOT ILLUMINATE.



As noted in the photo, the third brake light flashes about once per second but ONLY while the service brake is being depressed.