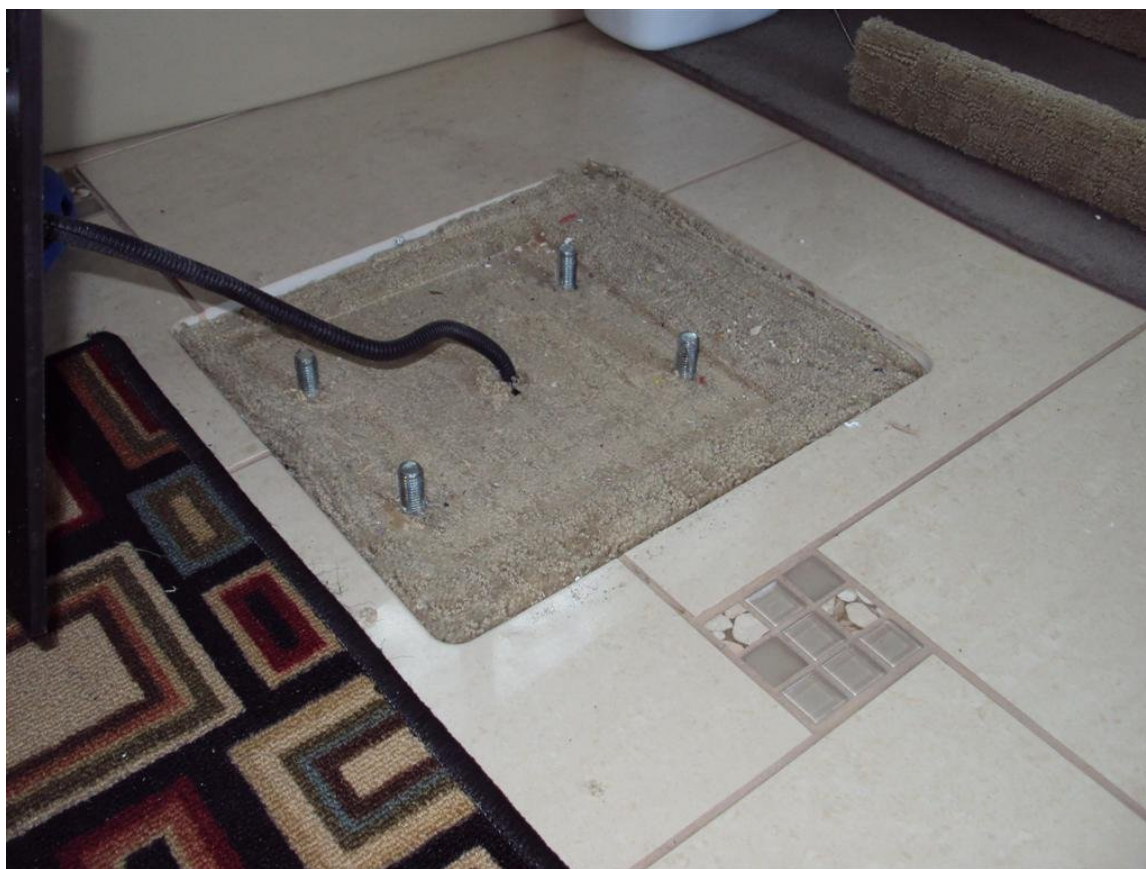




## 2010 43QGP Allegro Bus

4/16/2012

**FIFTY-FOURTH - coach modification – PILOT SEAT MOUNT MODIFICATION**. After the successful seat mount modification to the Co-pilot seat it was decided to modify the mounting on the Pilot's seat as well. This modification would not be as elaborate as was needed for the Co-pilot's seat this modification was only to raise the seat as I find the highest seat elevation does not raise the seat enough to allow my legs to be comfortable for longer hours behind the wheel.



The bolt pattern on the pilot seat is 4 1/2 inches wide by 7 3/8 inches in length. Four 1/2 inch couplers were screwed onto the four 1/2 studs welded to the chassis frame in the Tiffin welding shop. After the seat mount was set down over the four couplers four 1/2 inch bolts one inch in length were screwed into the couplers. This modification raised the pilot seat about 2 inches higher than the OEM installation.



After the carpeted trim was reinstalled the modification is well hidden under the chairs skirt.



This modification was made in hopes of having less leg fatigue while driving.