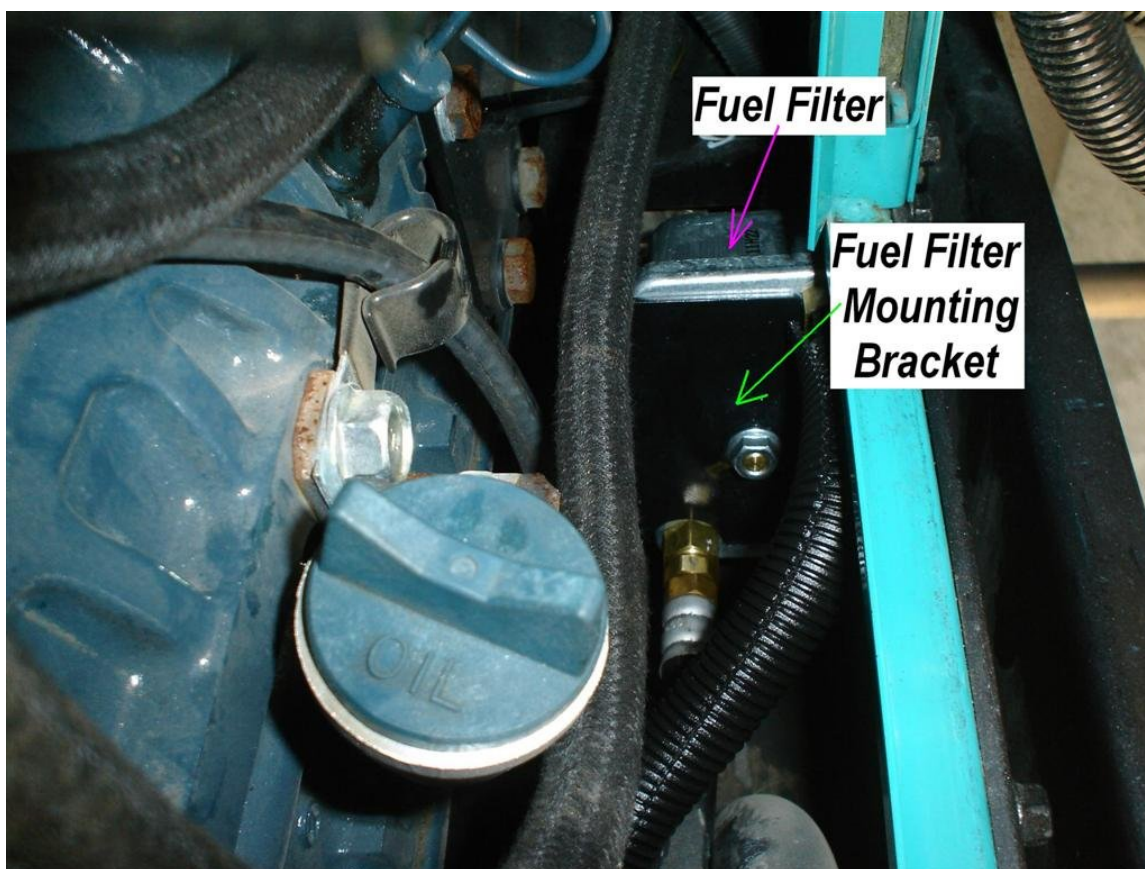




2010 43QGP Allegro Bus

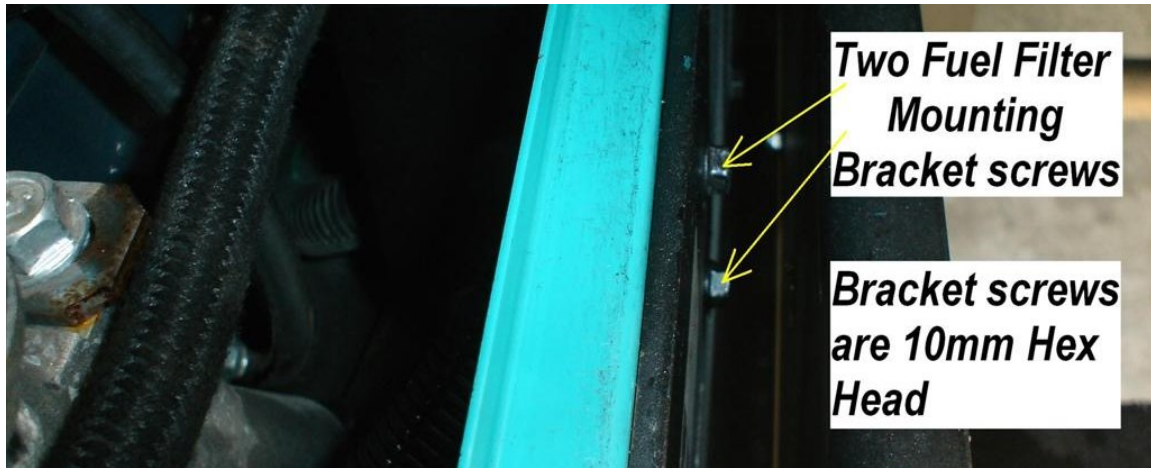
1/20/2012

FORTY-SEVENTH - coach modification - **10KW ONAN FUEL FILTER ACCESS.** Started and finished the first Onan fuel filter replacement today. Removing and replacing the fuel filter can be really hard to perform without proper planning and tools. This is not my first fuel filter replacement but it is the first replacement on a 10KW unit. The fuel filter is **ALMOST** impossible to remove and replace where it is mounted. The below photo was taken looking inside the generator's housing after a side access door had been removed.



There are two fuel hoses attached to the filter, each hose connection requires two wrenches in order to separate the fuel hose from the filter. The filter is mounted to a bracket which is mounted to the generators outside housing by two screws with 10 mm hex heads. The two screws are hard to access with wrenches the opening is narrow making them hard to reach using fingers. I

found removing them was easier by just using an open end wrench and allowing the screws to fall when they can out of the hole. The screws are caught in a pan under the generator once they have fallen they are easy to retrieve with a small magnet. In the below photo the two filter mounting bracket screws are shown.



After removing the fuel filter and mounting bracket from inside the engine housing, removing and replacing the fuel filter is not much work. Reinstalling the two mounting bracket screws I knew was going to be a problem. Installing the top screw took a matter of minutes. The lower screw took a little longer. I decided the only way to install the lower screw was to drill a 5/8 inch hole through the Onan slide metal which would allow access to the screws hole. The hole was drilled just below the top glide, as close as it could be drilled. The screw head can be seen inside the green circle below.

