



2010 43QGP Allegro Bus

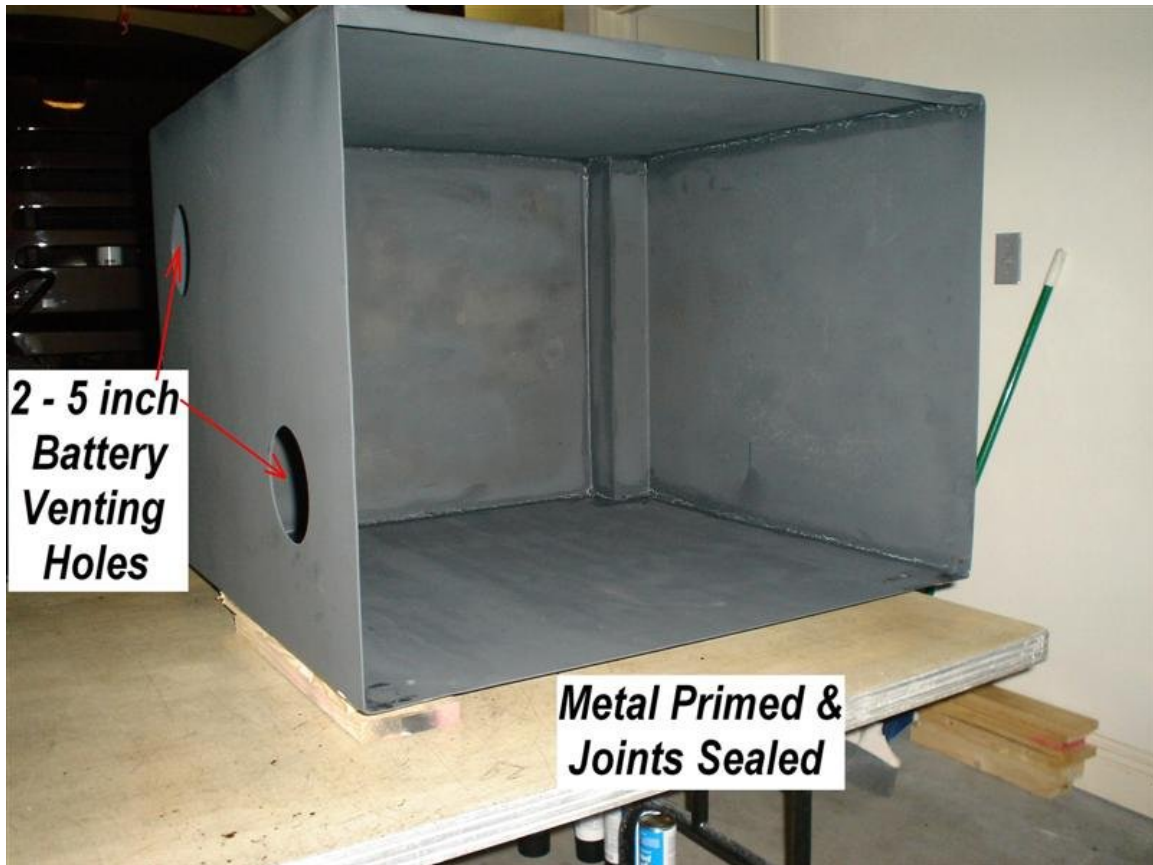
7/8/2011

THIRTYTH - coach modification - **PASSENGER SIDE HOUSE BATTERY COMPARTMENT.** Finally able to have my designed passenger side battery compartment built, by a local welder. I have a welder and I am capable of taking steel and ending with a finished product, however at the end of the day when 400 lbs of batteries are going to be cantilevered in a battery slide tray I want to have a back up plan if something bad does happen. That plan is a commercial welder's experience and my paid receipt from him. Our welder wanted to check dimensions with the battery slide tray in place I think he just wanted to make sure my design was going to work.



Today we picked up the new PS battery box. Now the fun really begins, we took time to dry install the box in order to mark where the bolt holes will be drilled to mount the new battery box to the chassis. We also marked and drilled holes for mounting the battery slide tray in the box once the battery

box has been installed on the chassis. After all of the bolt holes were marked the battery box was removed to drill the holes, we sealed the battery box welded joints then primed the bare metal. As with all of our coach modifications this one will be properly painted inside and outside prior to final installation. All installation hardware will be 3/8 inch stainless, bolts, washers and Nylock nuts.

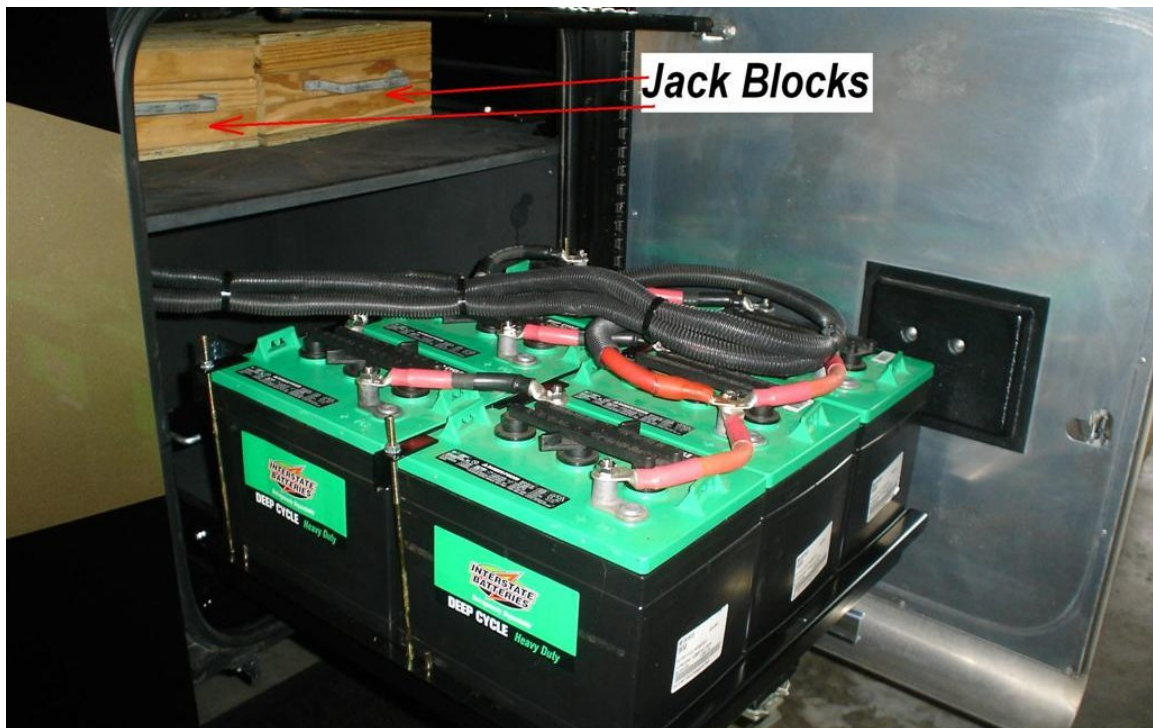
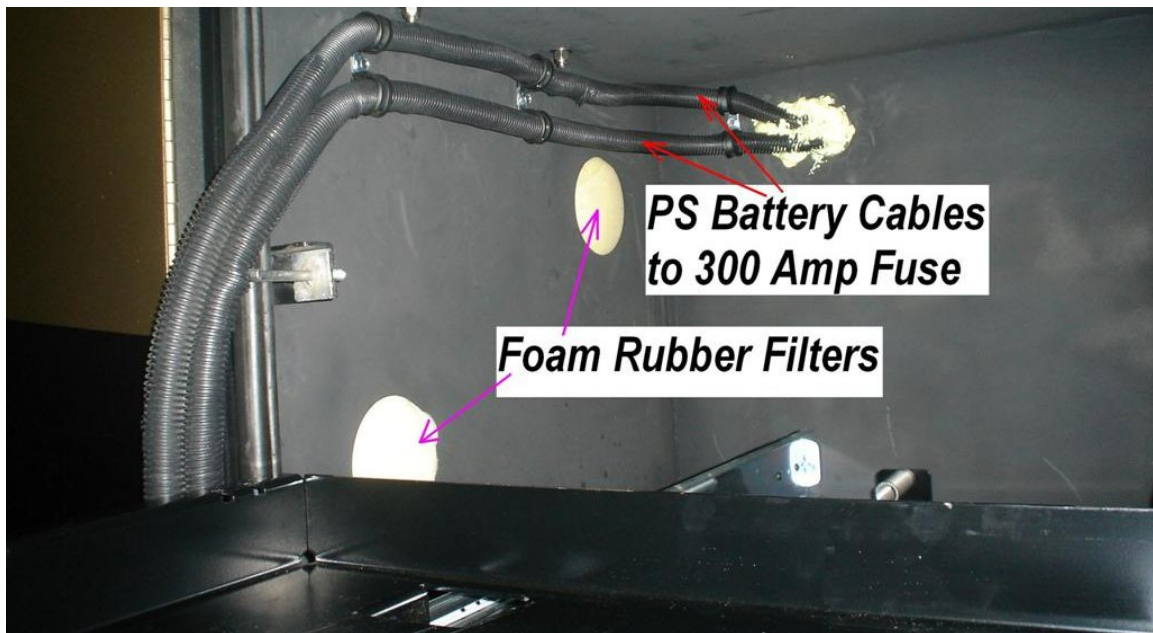


24 hours later after final painting we began installation onto the chassis. The design allows the box to be raised from the bottom of the cavity and then suspended from the old LP tank mounting brackets which were left for that purpose.

The door latch needed to be modified in order to remove about 1 1/2 inches of the latch which extended into the path of the battery tray when the tray was released to move forward. After the latch was modified the tray extends without conflict and the door latches as designed.

It was decided to mount the battery cables in the upper wall in order keep the cable clear and damage free while the battery tray is extended or closed. The cable entry opening was foamed to prevent entry of dirt and water into the

compartment. The filters will allow the movement of air to vent any fumes from the batteries.



648 Ahrs. Battery Capacity in Passenger Side Slide Tray, 648 Ahrs Battery Capacity in Drivers Side Slide Tray, **TOTAL HOUSE BATTERY CAPACITY 1296 Ahrs.**