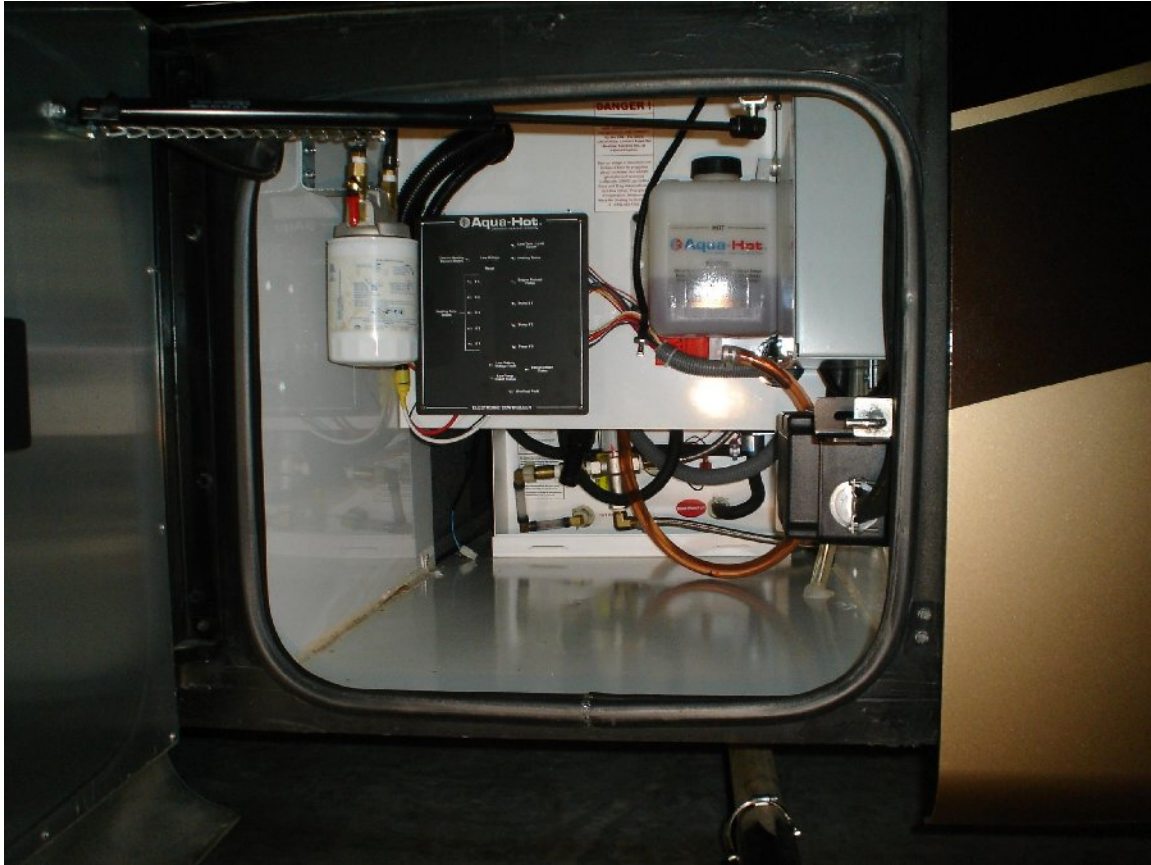




The vacuum cleaner was removed from the Aqua-Hot's compartment floor in a previous modification. The compartment light fixture, fuel filter fixture and Aqua-Hot control panel were all relocated, making them more user friendly.



The Aqua-Hot compartment on the driver's side has been made user friendly, components have been relocated making them more accessible for servicing. Components in this compartment include: a Progressive Industries EMS-HW50C, a Tiffin 3rd Generation Transfer Switch, and the Aqua-Hot's coolant reservoir, Control Panel, and Fuel Filter.

Our coach Progressive Industries EMS-50C has two remote displays, the selector switch for selecting between displays # 1 and display # 2 is also mounted in the wet bay on the tank wall along with permanently mounted remote display # 1. Remote display # 2 can be moved to any telephone plug connection inside the coach. The EMS information when switched to remote # 2 is fed through the coach's telephone wiring from the wet bay telephone jack which is connected to the remote display selector switch's # 2 connection.