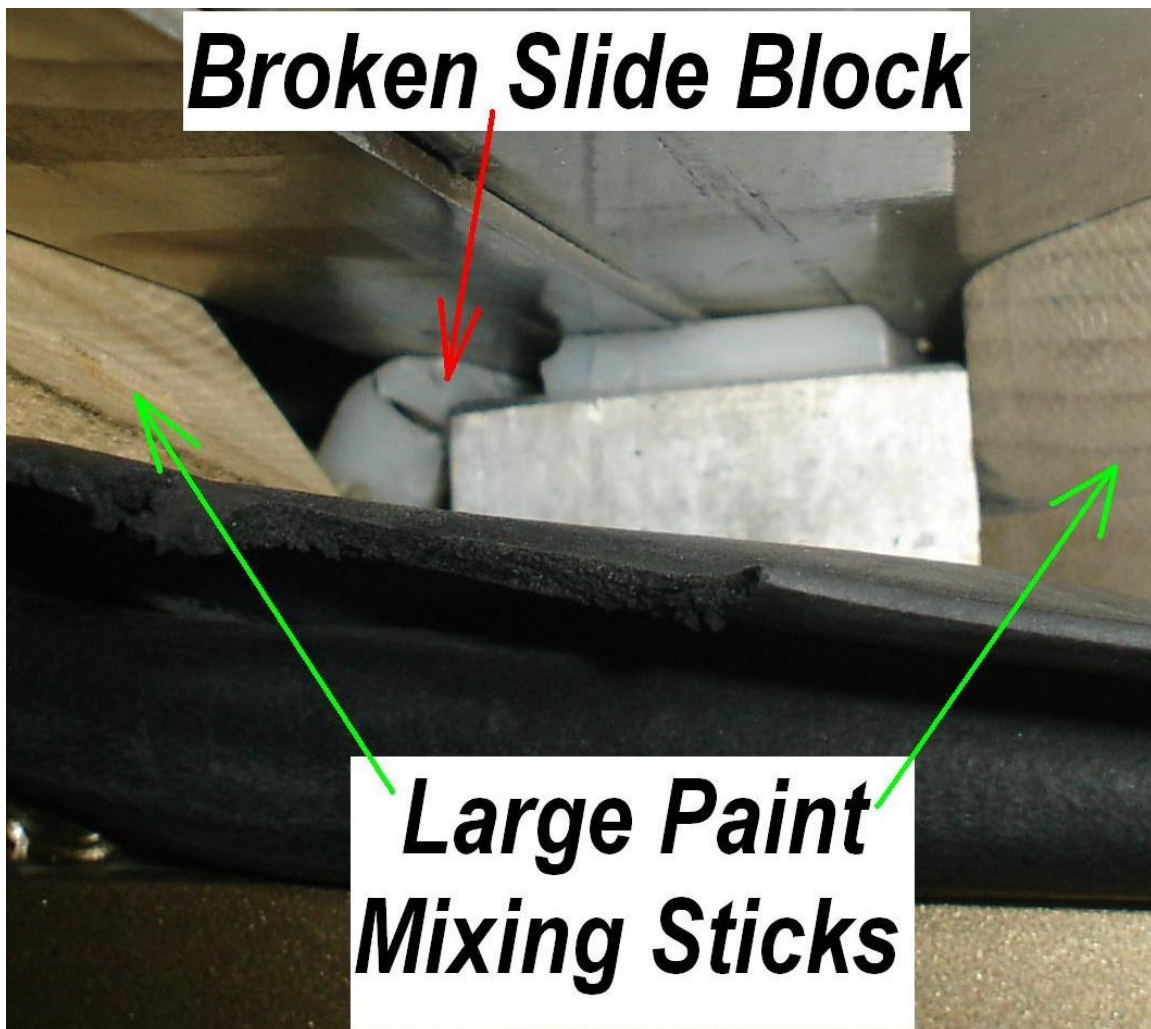


2010 43QGP Allegro Bus



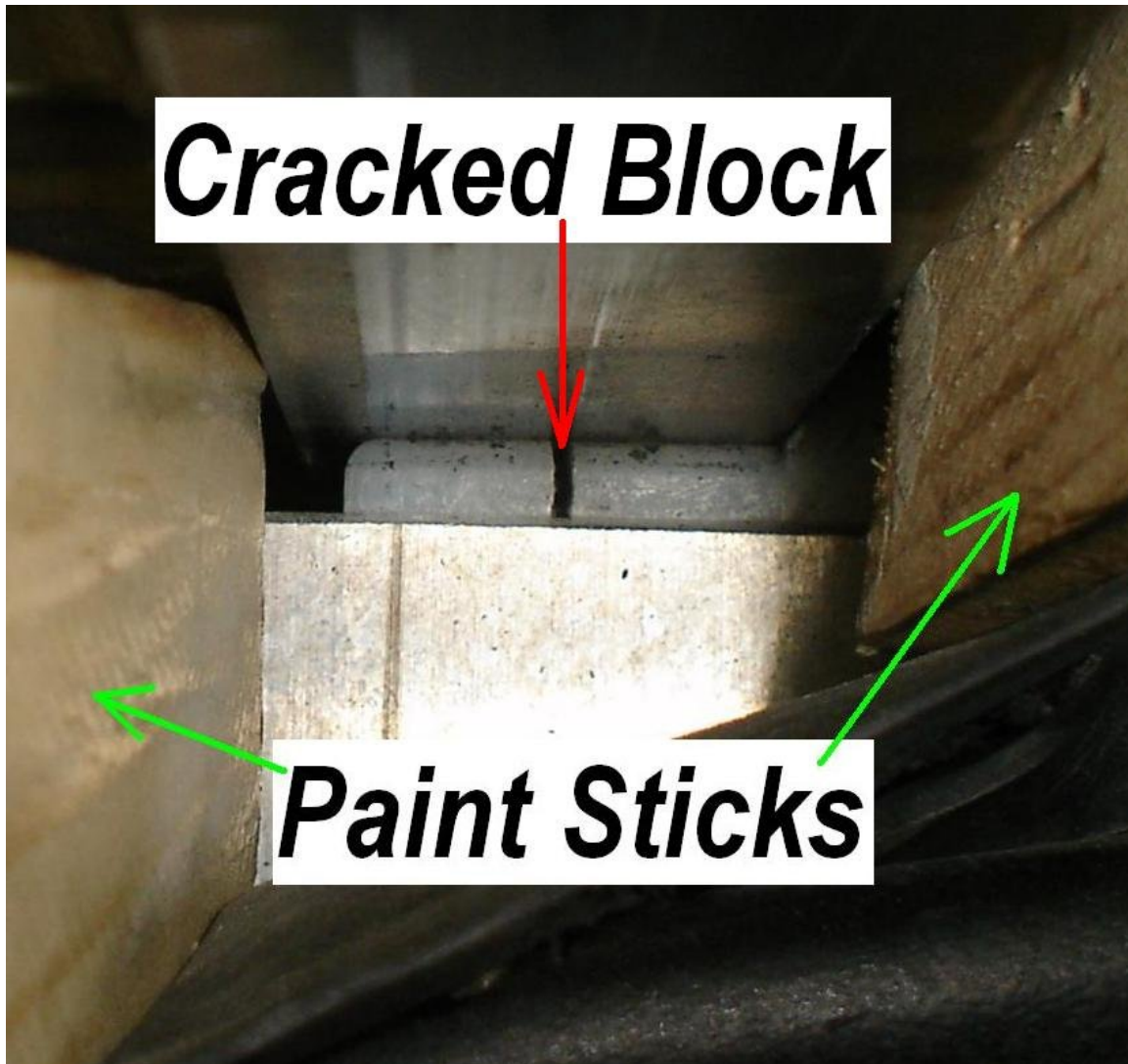
2/6/2012

37 – FYI - BEDROOM SLIDE PROBLEM. After one year of ownership our coach has settled down, we still have a few existing problems and can add a few new problems to the list. The latest new found problem relates to the passenger side bedroom slide. Recently we noticed the painted colors were no longer lining up with the adjacent lines when the slide was closed. After some research what we found is shown in the following two photos.



The above photo is the gliding block located on the left side of the passenger side bedroom slide. The broken block is easily seen with the rubber gasket pushed/pulled out of the way using the paint mixing sticks.

The gliding blocks are built with a short "L" shaped LIP on the outside edge which is designed to keep the slide centered as the slide is extended and retracted. It appears the slide was originally installed with the left end of the slide riding on top of that gliding blocks LIP. The coach was painted with the problem existing, over time and use the weight of the slide broke the blocks LIP which fell away from the flat portion of the block thus allowing the slide to drop down about 3/8 inch. After which the slide paint scheme no longer matched the paint scheme on the coach sidewall when the slide is closed.



The above photo is the right side of the passenger bedroom slide the block is cracked in two pieces. This is just another item one of many for Tiffin to correct.