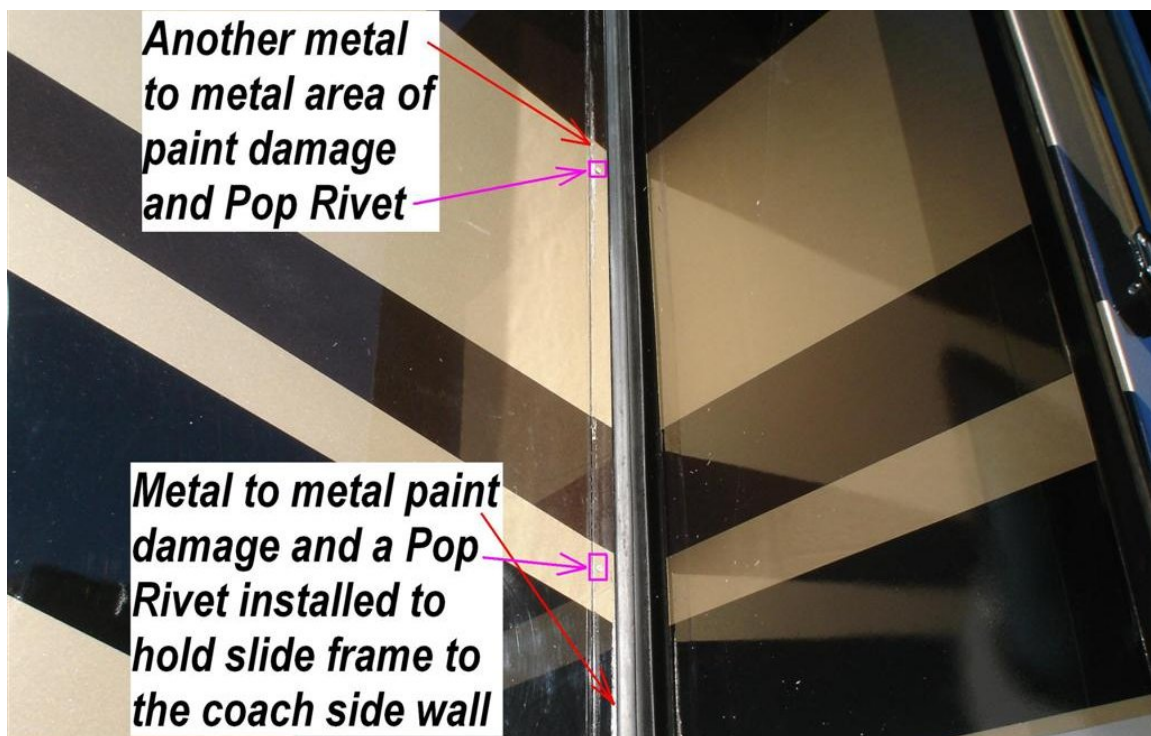




2010 43QGP Allegro Bus

11/30/2011

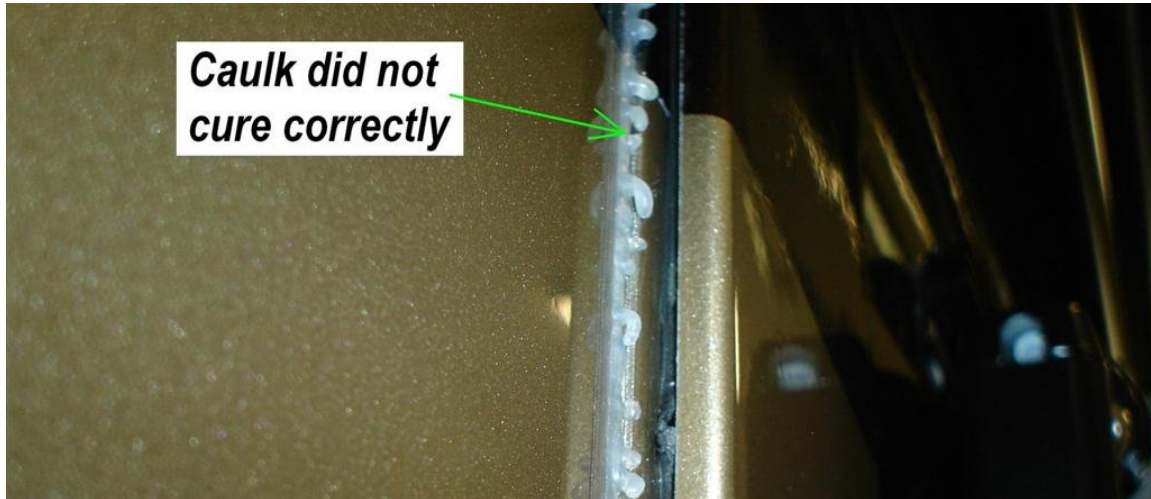
34 – FYI - TIFFIN'S GALLEY SLIDE REPAIR. Recently we noticed paint had been rubbed off of the frame around the galley slide on the end near the kitchen sink. First we found the rubber gasket had moved from where it had originally been stuck on the slide that allowed the paint to paint contact which rubbed the paint off of the slide frame mounted in the coach sidewall. After the rubber gasket was moved back to where it belonged we found the reason behind the damage, the slide frame attached to the coach side wall had become separated by about 1/4 of an inch from the side wall. This 1/4 inch was bare metal, the tech decided the only way to keep the two pieces together was to install five 1/8" pop rivets in the frame in order to clamp the slide frame to the coach's sidewall.



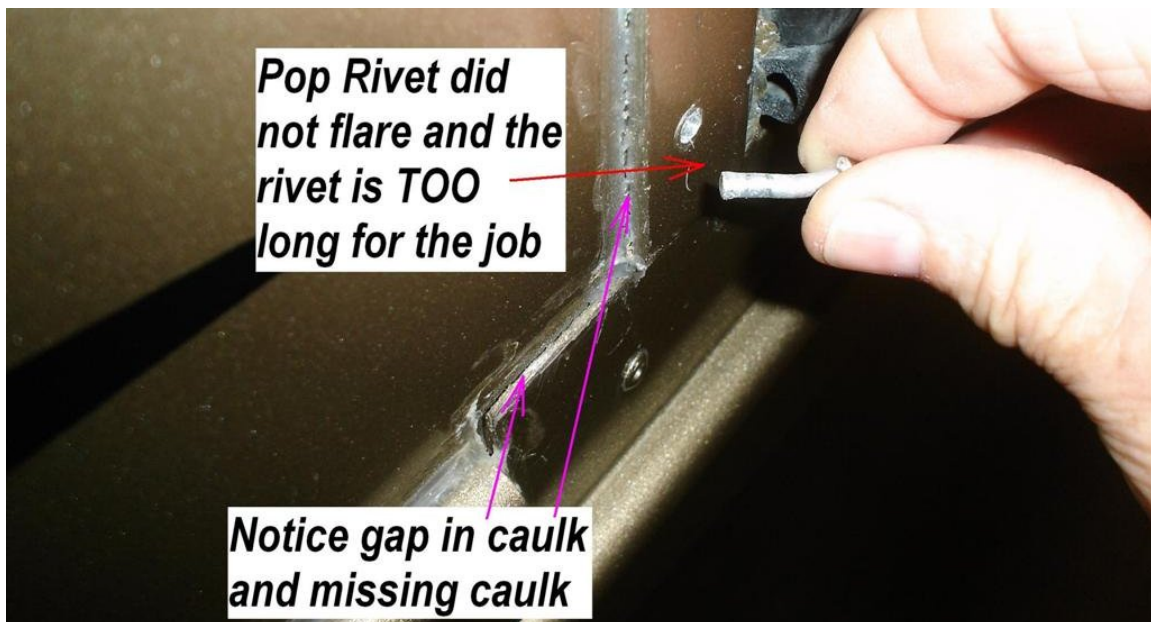
After the pop rivets had been installed the coach was sent to the body shop to have the damaged area sanded, prepped, painted and caulked.

All of the above was performed at Tiffin's Red Bay service center during one of our warranty trips. After arriving home from Red Bay I noticed the

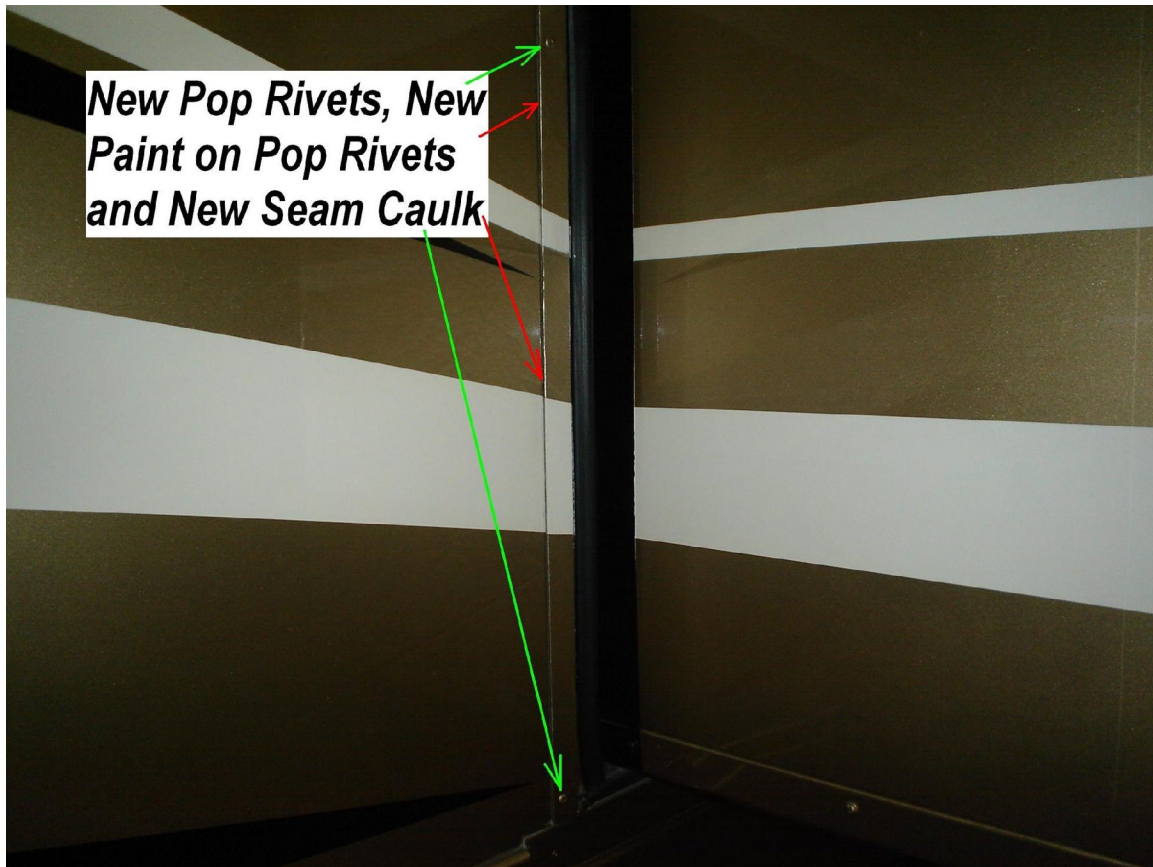
caulk around the frame appeared to have bubbled up. After checking it turned out the caulk was not bubbling but where the frame had been moving side to side allowed the caulk to not be able to cure properly allowing bubbles to occur before the caulk cured after the bubbles had formed.



I also noticed the pop rivets were not tight against the sidewall frame which allowed the frame to move slightly side to side just as it had before but to a lesser extent now then before installing the pop rivets. Upon closer inspection the lower pop rivet had not popped/flared the end of the rivet which is necessary for holding the two pieces of material together but was just sitting loose in the hole, the rivet was removed using just my fingers.



Today began my modification to this FYI. The Tiffin installed 1/8" by 3/4" pop rivets were all drilled out to remove them then they were replaced with 3/16" by 3/8" pop rivets which are able to capture the two pieces making up the slides frame and coach sidewall and clamp them together. The hardest part of this modification was removing the caulking installed at the joint of the sidewall and slide frame. Removal of the old caulking, cleaning the coach wall and prepping for the new caulk took me over four hours. After that I still had to install the new caulking in the seam and apply touch up paint on the heads of the new pop rivets.



Another Crusingator repair job well done, yes I agree with many other owners it is to bad the Red Bay service center when they had the opportunity six weeks ago was unable to perform this repair as well as I did in my garage.